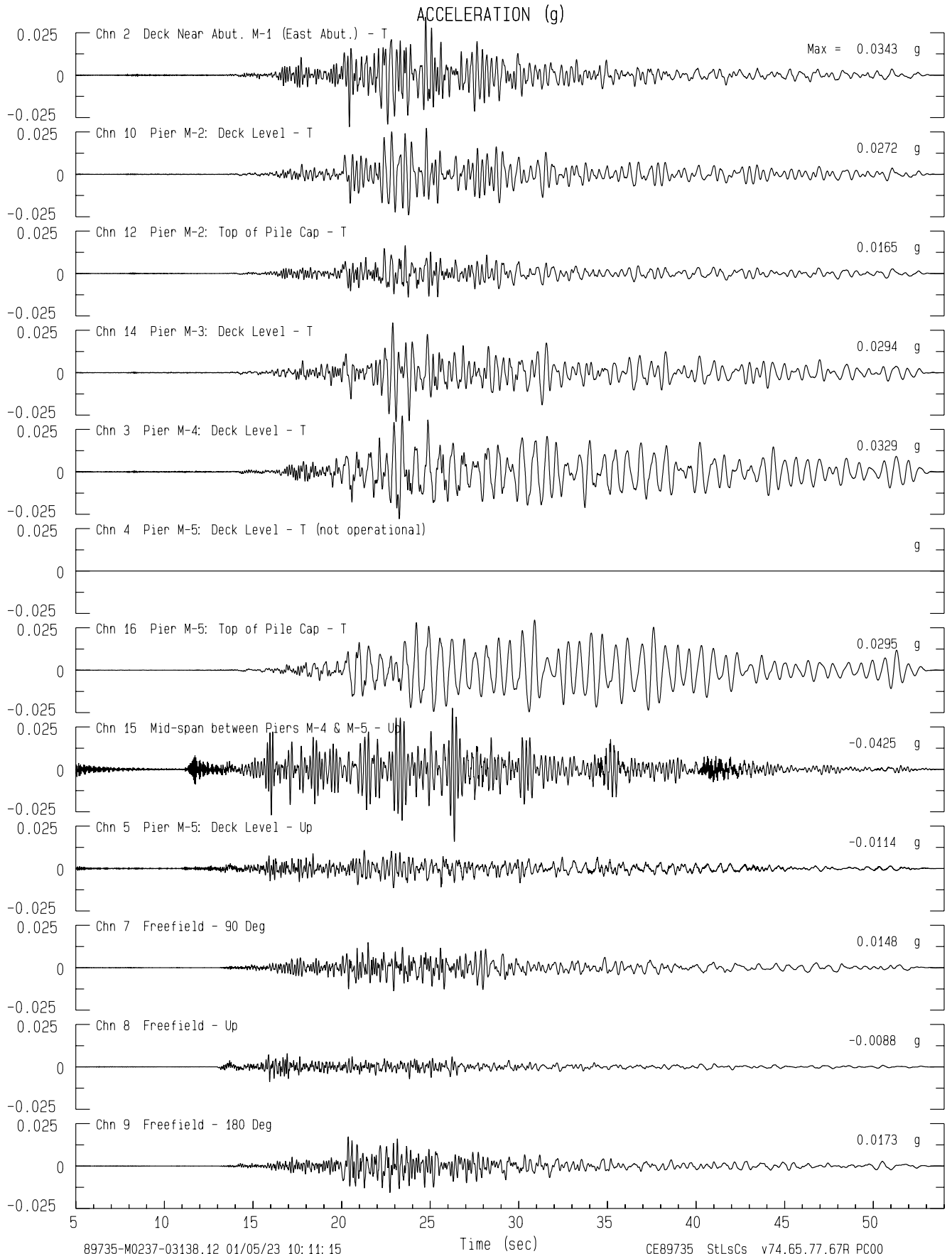
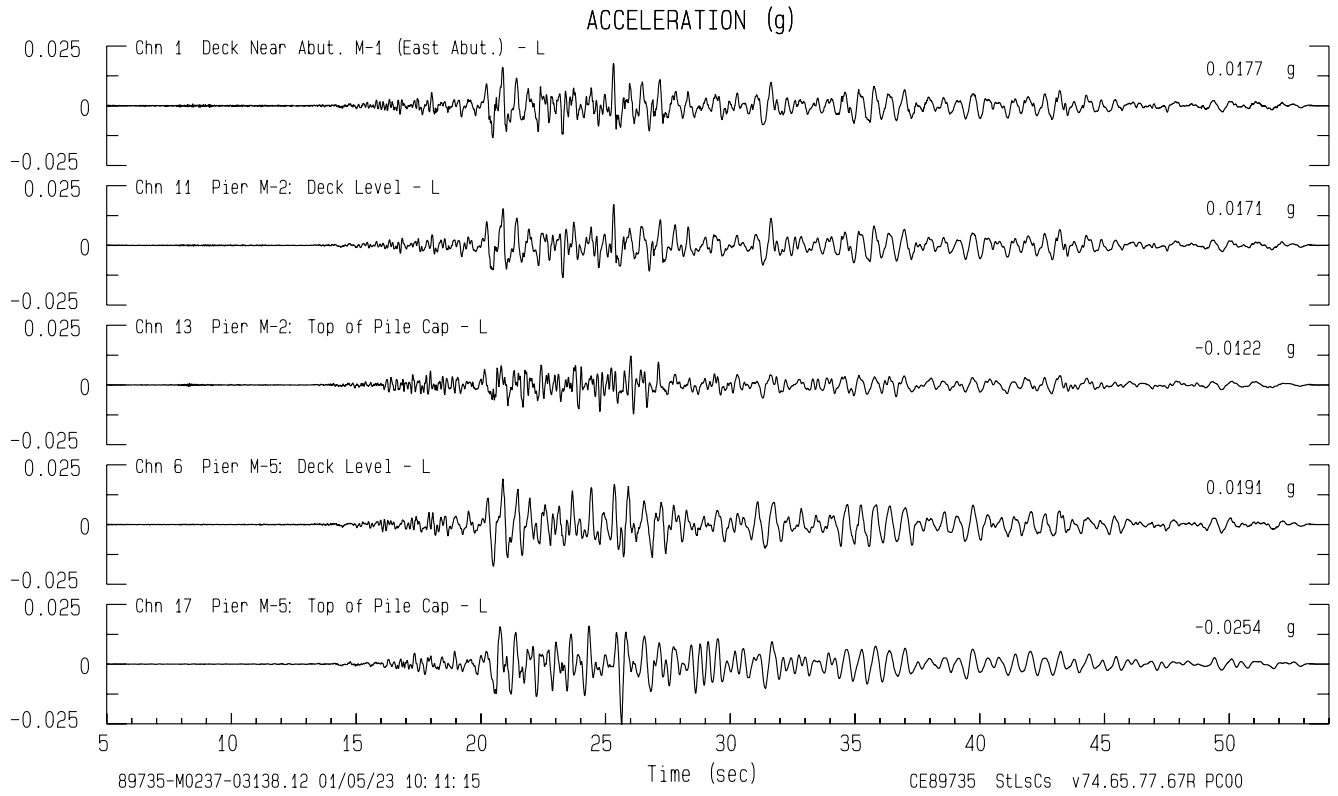


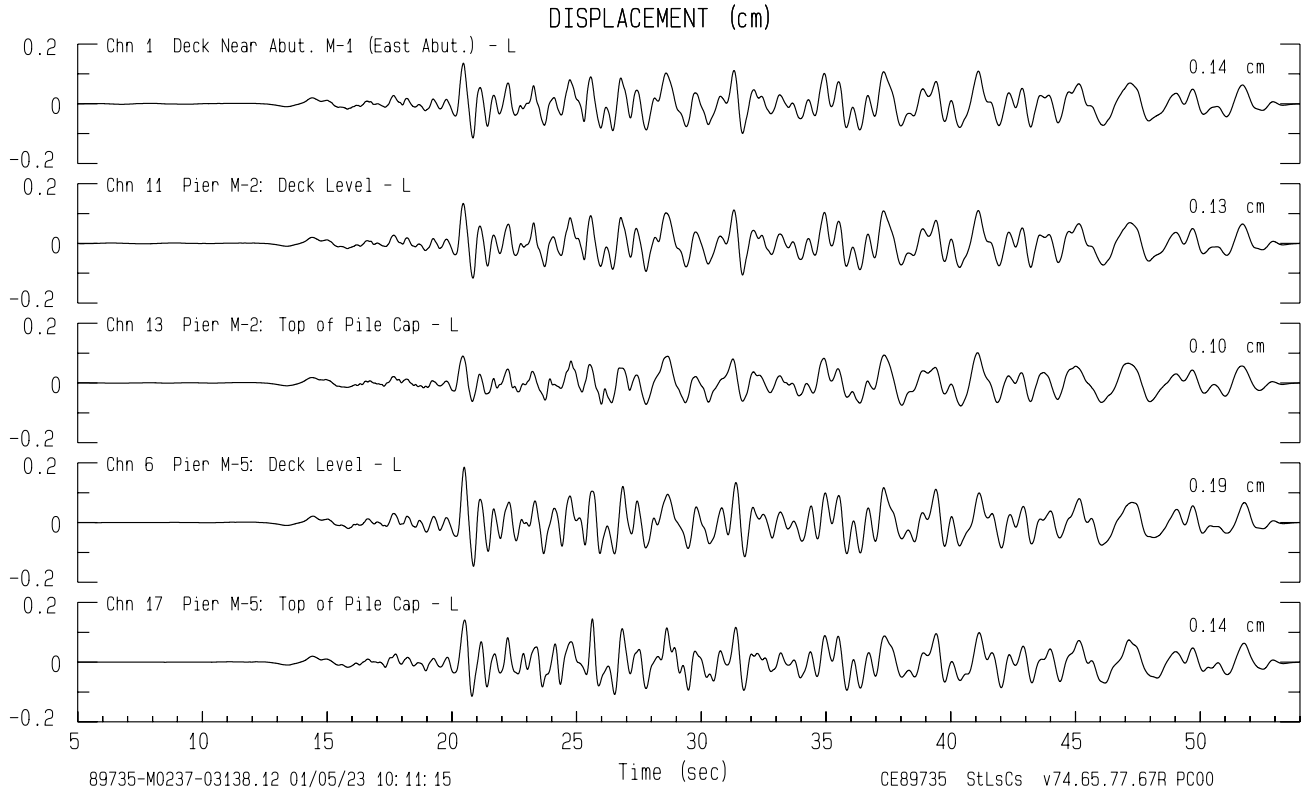
Eureka - Middle Channel Bridge CGS/Caltrans Sta 89735
Rcrd of Sun Jan 1, 2023 10:35:00.0 PST (GPS)
Frequency Band Processed: 3.3 secs to 40.0 Hz
CISN/CSMIP Preliminary Strong Motion Processing - Subject to Revision



Eureka - Middle Channel Bridge CGS/Caltrans Sta 89735
Rcrd of Sun Jan 1, 2023 10:35:00.0 PST (GPS)
Frequency Band Processed: 3.3 secs to 40.0 Hz
CISN/CSMIP Preliminary Strong Motion Processing - Subject to Revision

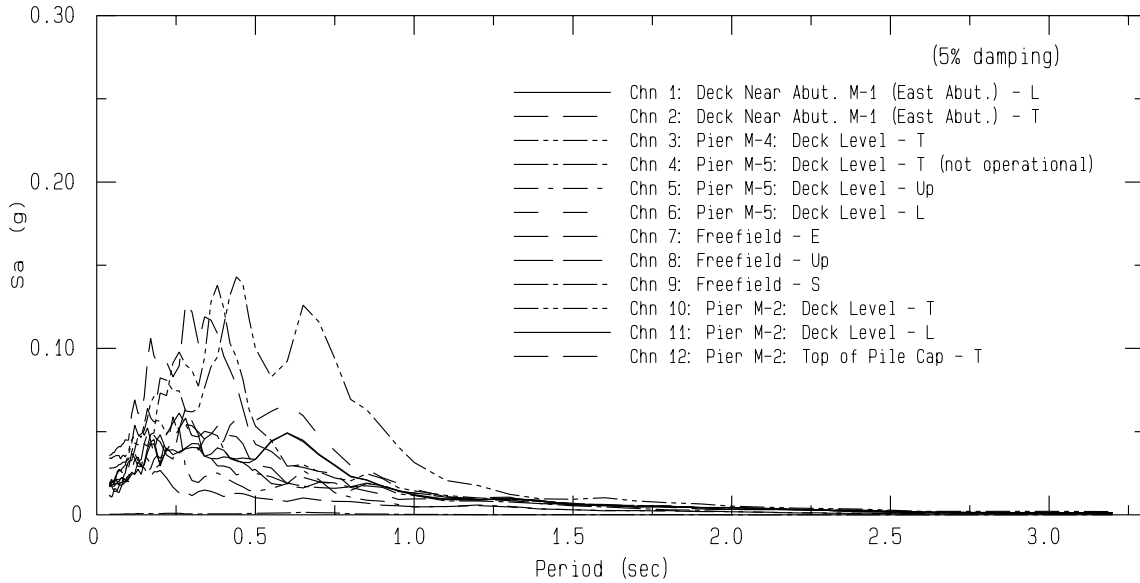


Eureka - Middle Channel Bridge CGS/Caltrans Sta 89735
Rcrd of Sun Jan 1, 2023 10:35:00.0 PST (GPS)
Frequency Band Processed: 3.3 secs to 40.0 Hz
CISN/CSMIP Preliminary Strong Motion Processing - Subject to Revision

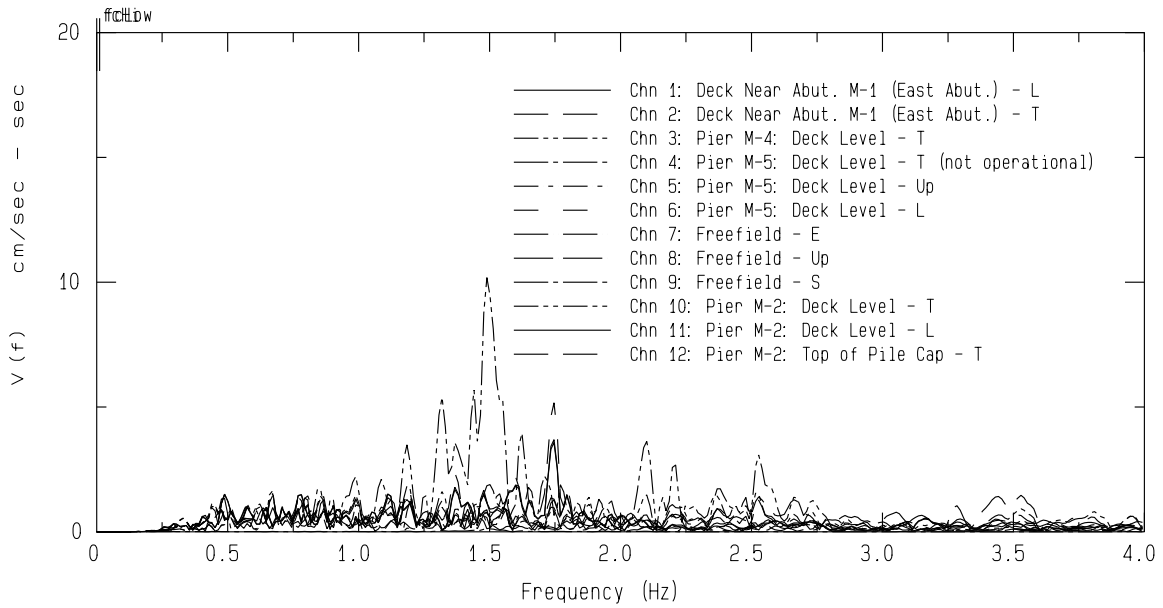


Eureka - Middle Channel Bridge CGS Sta 89735
 Rcrd of Sun Jan 1, 2023 10:35:00.0 PST
 Frequency Band Processed: 3.3 secs to 40.0 Hz
 Automated Strong Motion Processing - Preliminary and Subject to Revision

SPECTRAL ACCELERATION, Sa

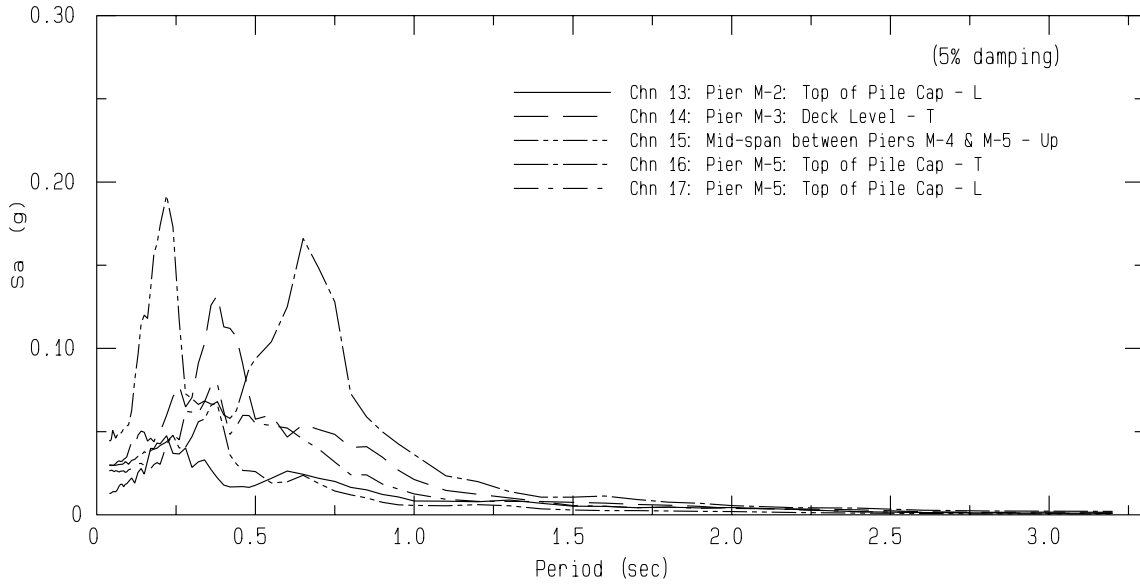


VELOCITY FOURIER SPECTRUM



Eureka - Middle Channel Bridge CGS Sta 89735
 Rcrd of Sun Jan 1, 2023 10:35:00.0 PST
 Frequency Band Processed: 3.3 secs to 40.0 Hz
 Automated Strong Motion Processing - Preliminary and Subject to Revision

SPECTRAL ACCELERATION, Sa



VELOCITY FOURIER SPECTRUM

