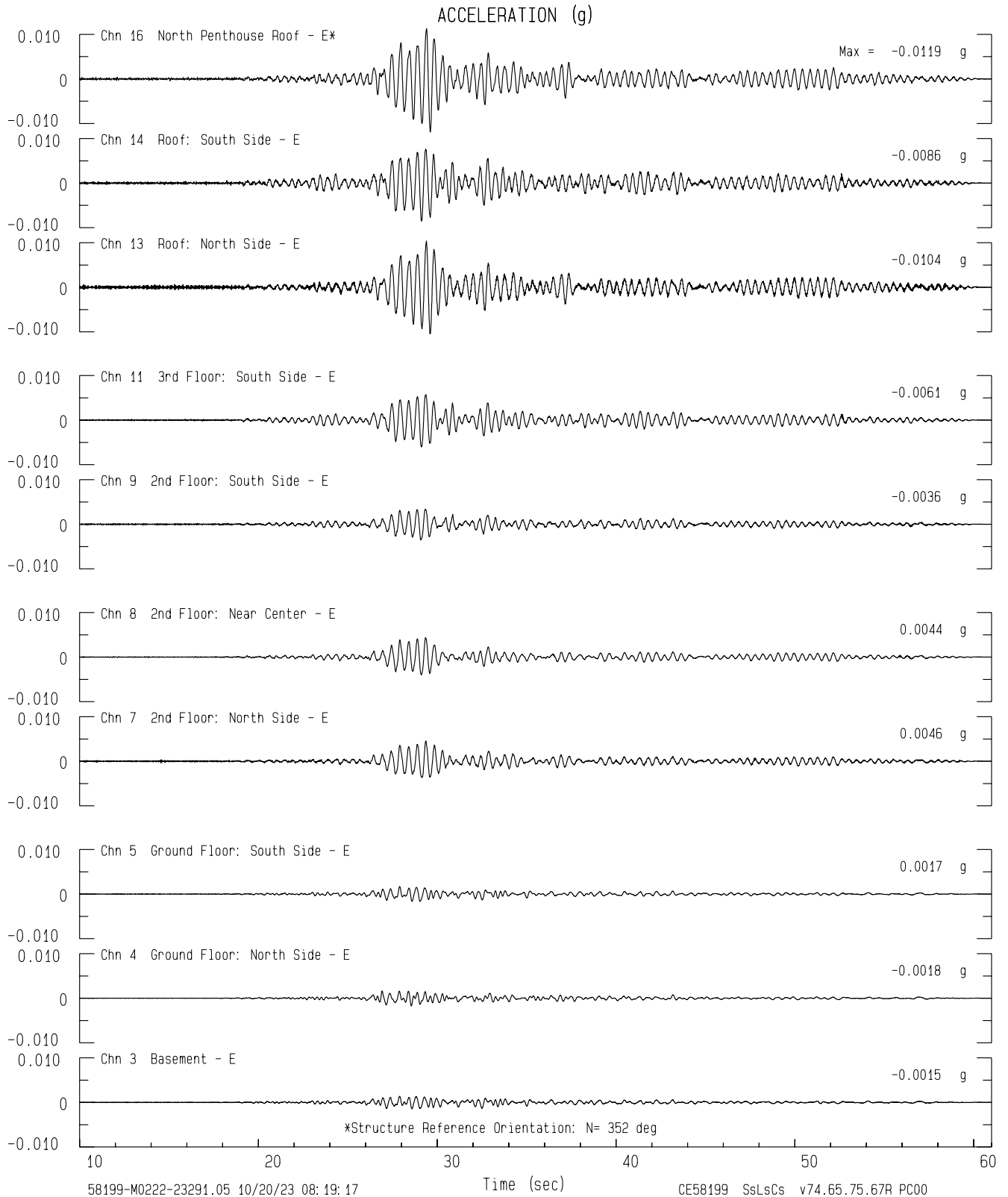
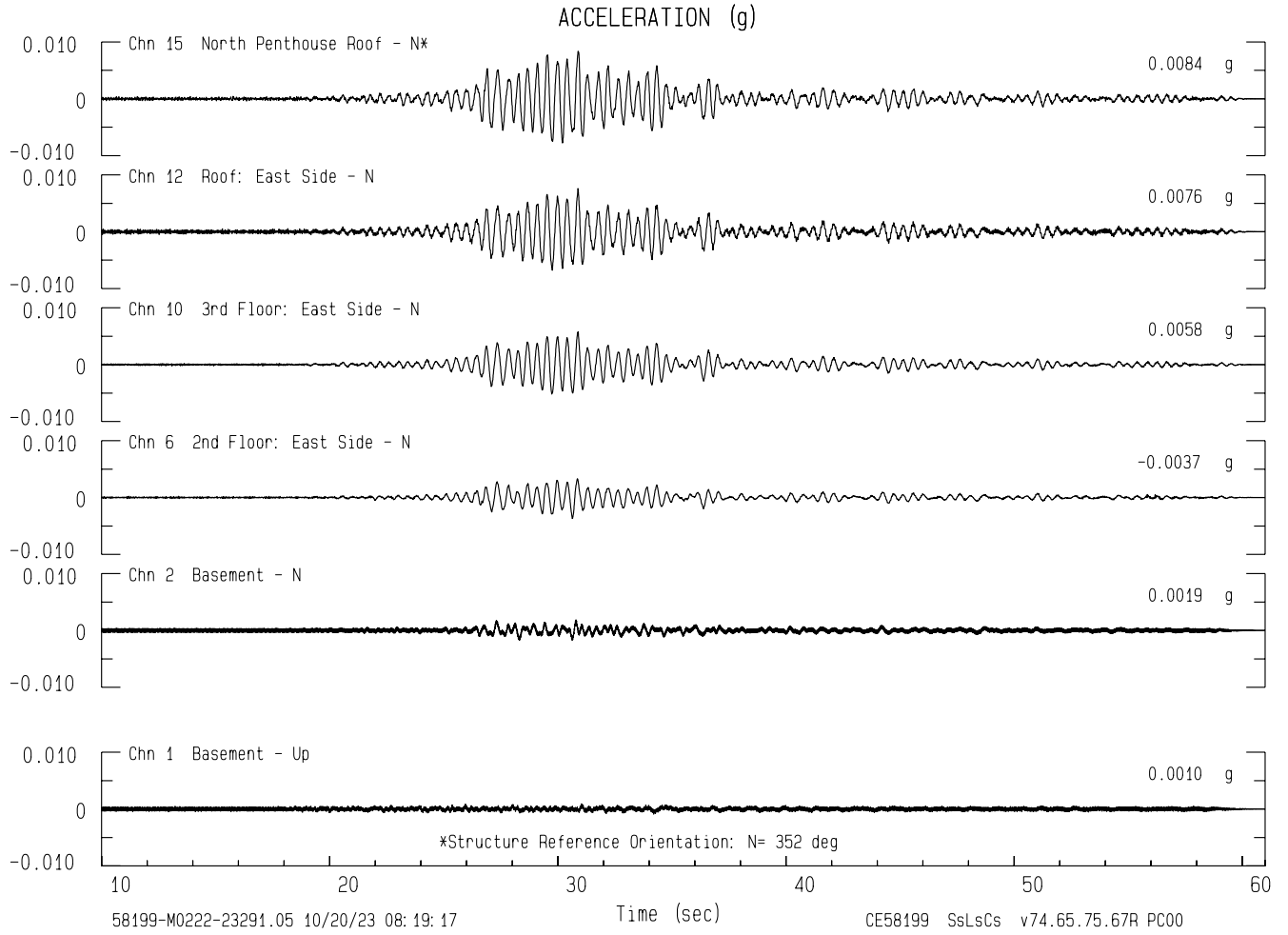


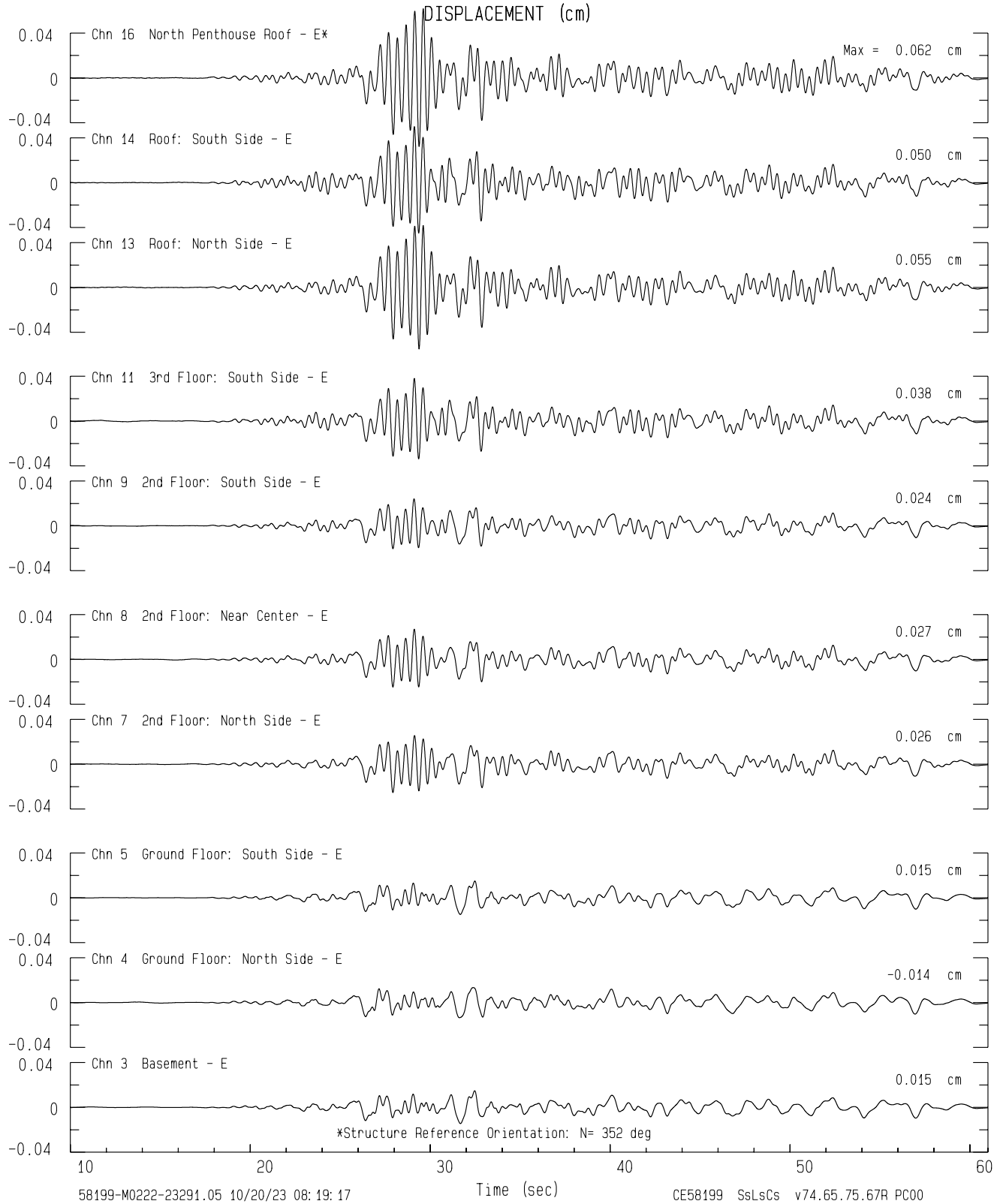
Walnut Creek - 3-story Hospital CGS/OSHPD Sta 58199  
 Rcrd of Wed Oct 18, 2023 09:29:07.0 PDT (GPS)  
 Frequency Band Processed: 3.3 secs to 40.0 Hz  
 CISN/CSMIP Preliminary Strong Motion Processing - Subject to Revision



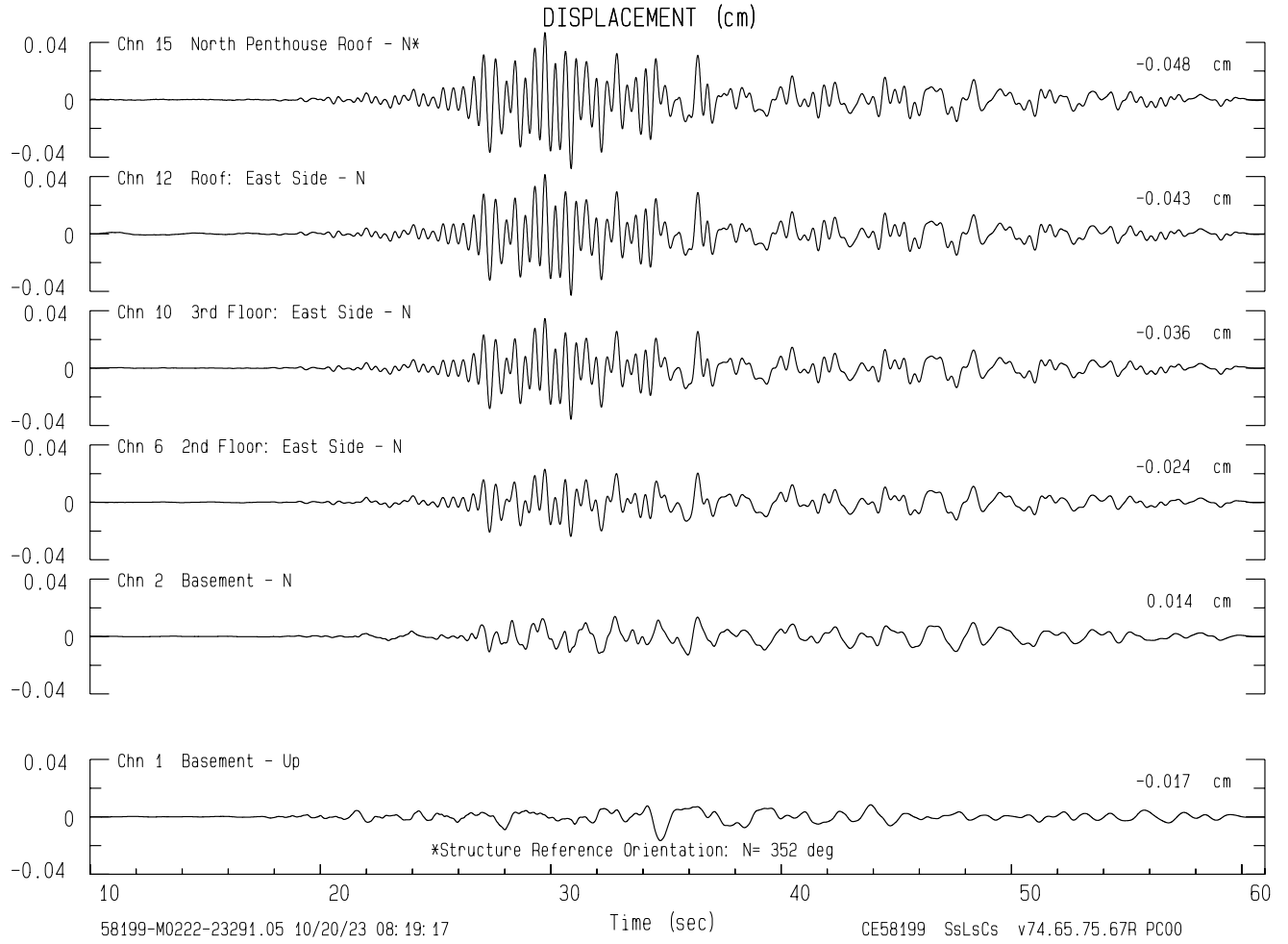
Walnut Creek - 3-story Hospital CGS/OSHPD Sta 58199  
Rcrd of Wed Oct 18, 2023 09:29:07.0 PDT (GPS)  
Frequency Band Processed: 3.3 secs to 40.0 Hz  
CISN/CSMIP Preliminary Strong Motion Processing - Subject to Revision



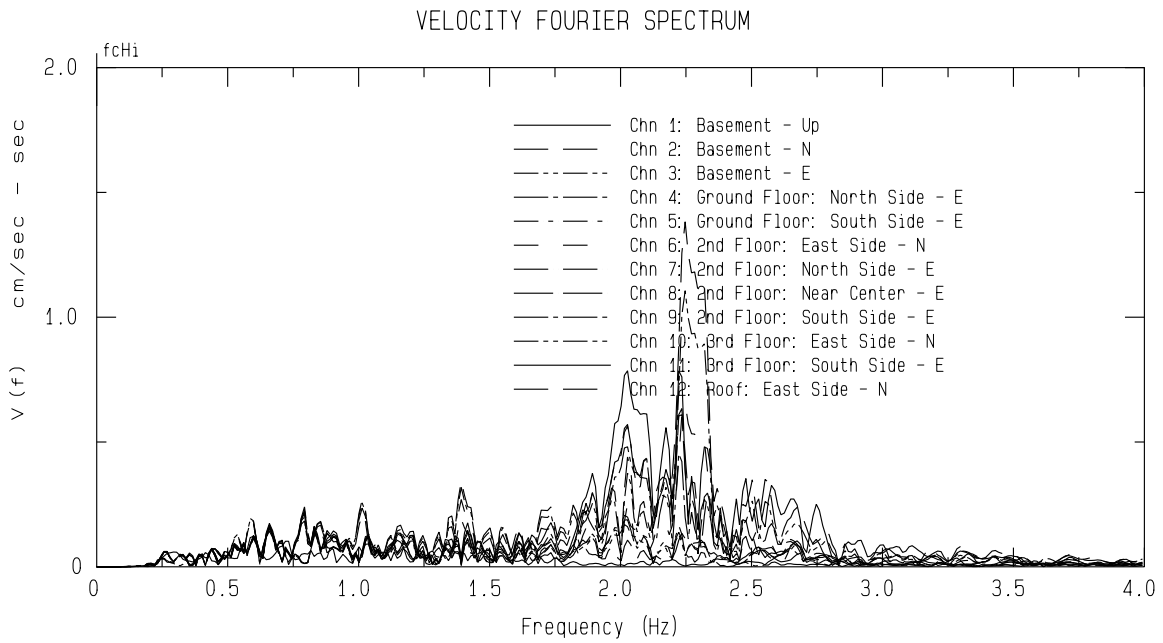
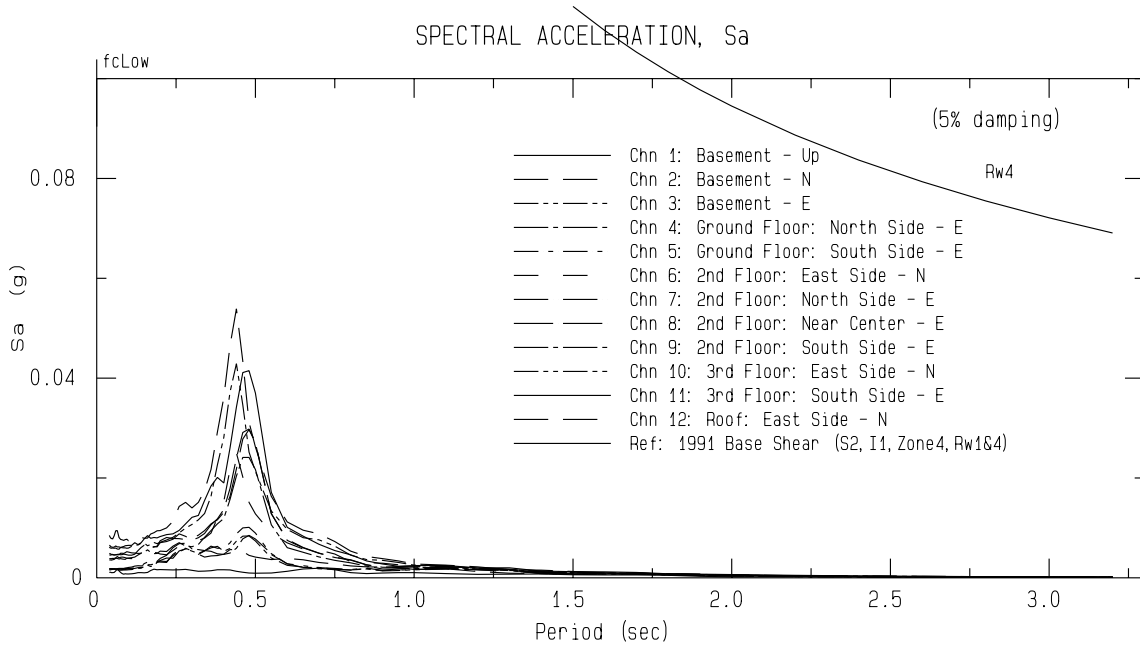
Walnut Creek - 3-story Hospital CGS/OSHPD Sta 58199  
 Rcrd of Wed Oct 18, 2023 09:29:07.0 PDT (GPS)  
 Frequency Band Processed: 3.3 secs to 40.0 Hz  
 CISN/CSMIP Preliminary Strong Motion Processing - Subject to Revision



Walnut Creek - 3-story Hospital CGS/OSHPD Sta 58199  
Rcrd of Wed Oct 18, 2023 09:29:07.0 PDT (GPS)  
Frequency Band Processed: 3.3 secs to 40.0 Hz  
CISN/CSMIP Preliminary Strong Motion Processing - Subject to Revision



Walnut Creek - 3-story Hospital CGS Sta 58199  
 Rcrd of Wed Oct 18, 2023 09:29:07.0 PDT  
 Frequency Band Processed: 3.3 secs to 40.0 Hz  
 Automated Strong Motion Processing - Preliminary and Subject to Revision



Walnut Creek - 3-story Hospital CGS Sta 58199  
 Rcrd of Wed Oct 18, 2023 09:29:07.0 PDT  
 Frequency Band Processed: 3.3 secs to 40.0 Hz  
 Automated Strong Motion Processing - Preliminary and Subject to Revision

