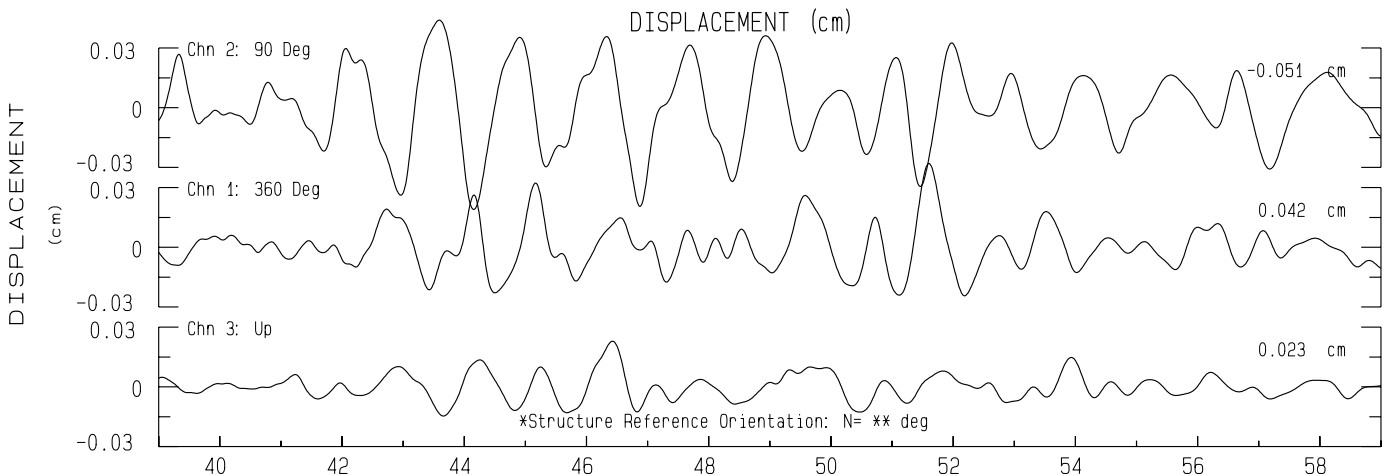
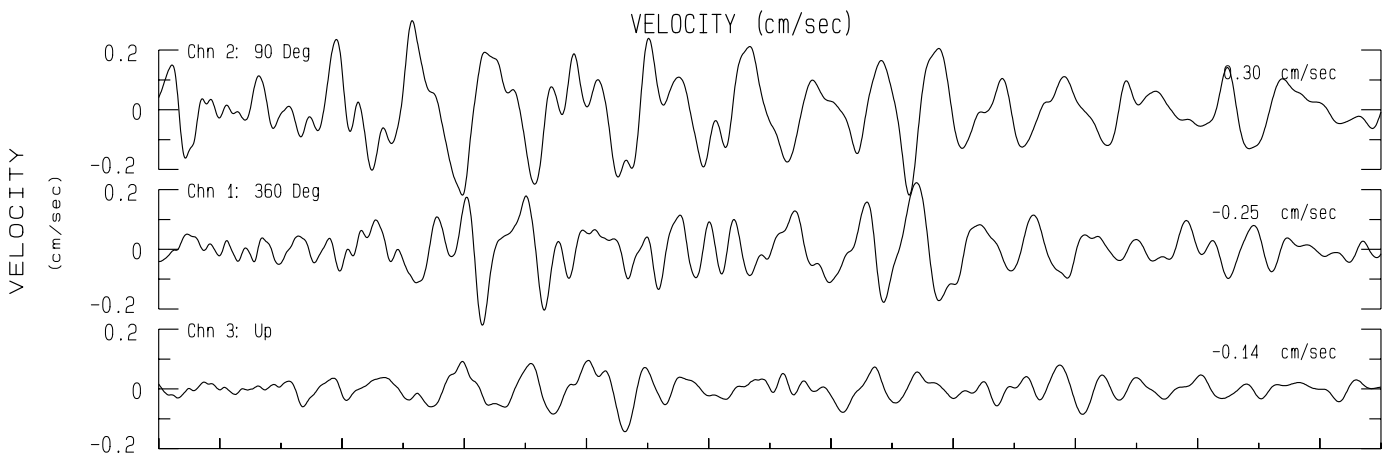
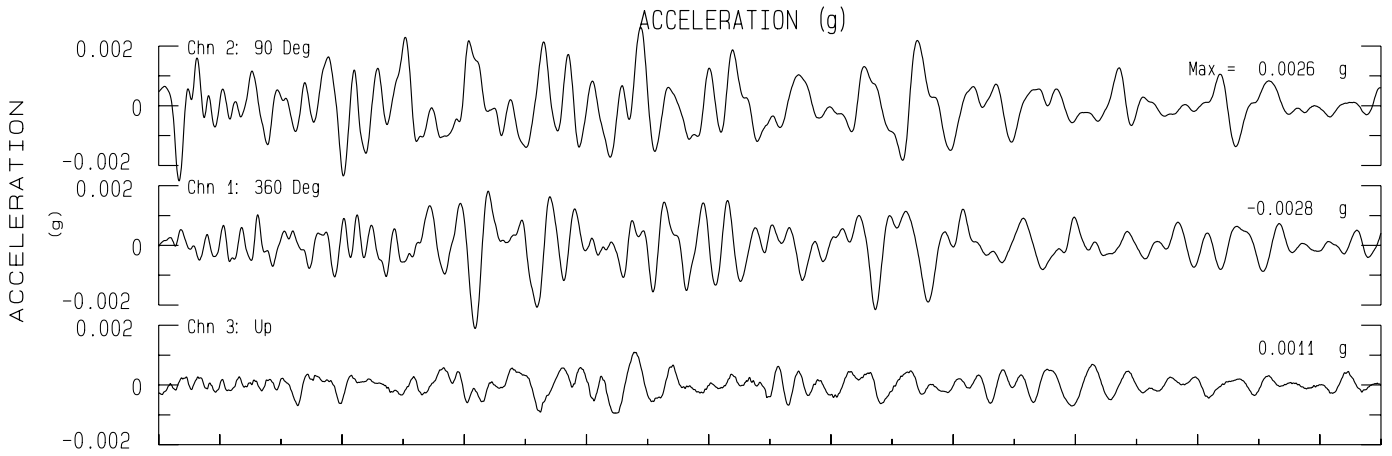


Livermore FS 8 Scenic USGS Sta 1803
Rcrd of Wed Oct 18, 2023 09:28:53.2 PDT (GPS)

Frequency Band Processed: 3.3 secs to 40.0 Hz
CISN/CSMIP Preliminary Strong Motion Processing - Subject to Revision



Livermore FS 8 Scenic USGS Sta 1803
Rcprd of Wed Oct 18, 2023 09:28:53.2 PDT
Frequency Band Processed: 3.3 secs to 40.0 Hz
Automated Strong Motion Processing - Preliminary and Subject to Revision

